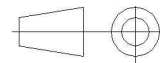
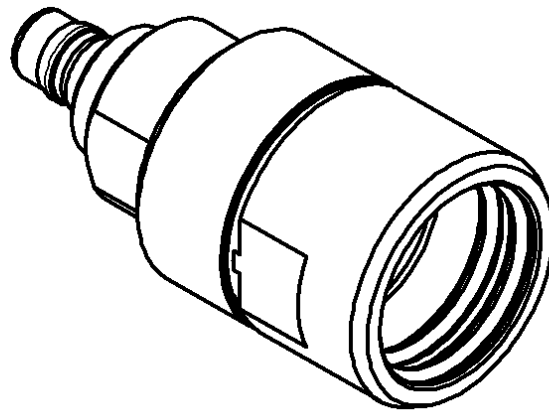
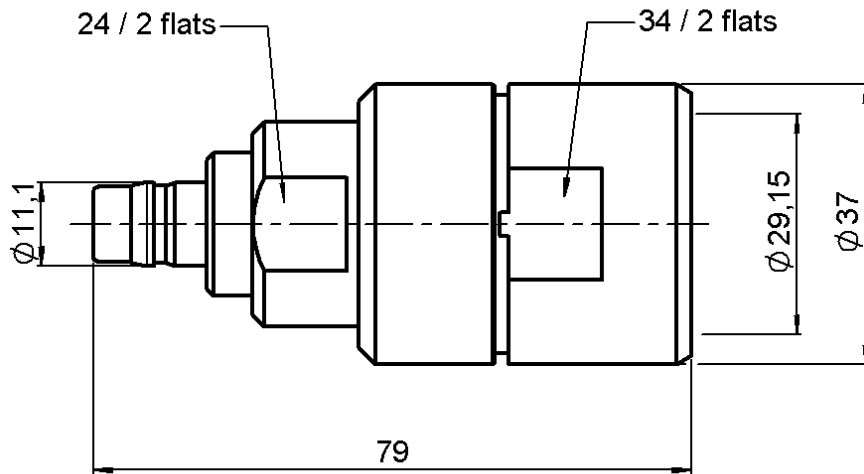


STRAIGHT JACK EZ FIT TYPE
7/8" FLEXIBLE CORRUGATED CABLE

R164.231.000

Series : QN



All dimensions are in mm.

COMPONENTS	MATERIALS	PLATINGS (µm)
BODY	BRASS	BBR 0.5 OVER SILVER 3
CENTER CONTACT	BERYLLIUM COPPER, BRASS	SILVER 5 OVER COPPER 0.5
OUTER CONTACT		
INSULATOR	PTFE	
GASKET	SILICONE RUBBER	
OTHERS PARTS	BRASS	BBR 0.5 OVER SILVER 3
-	-	-
-	-	-

Issue : 0441 B

In the effort to improve our products, we reserve the right to make changes judged to be necessary.



RADIALL®

STRAIGHT JACK EZ FIT TYPE
7/8" FLEXIBLE CORRUGATED CABLE

R164.231.000

Series : QN

PACKAGING

Standard	Unit	Other
1	-	Contact us

SPECIFICATION

ELECTRICAL CHARACTERISTICS

Impedance		50 Ω
Frequency		2.5 GHz
VSWR	**1.05 +	0.035 x F(GHz) Maxi
Insertion loss		0,048 √F(GHz) dB Maxi
RF leakage	- (***90	- F(GHz)) dB Maxi
Voltage rating		1400 Veff Maxi
Dielectric withstanding voltage		2500 Veff mini
Insulation resistance		5000 MΩ mini

CABLE ASSEMBLY

Stripping	a	b	c	d	e	f
mm	26.0	0.00	0.00	0.00	0.00	0.00

Assembly instruction :

Recommended cable(s)
M 1474 Z
LDF5-50A-7/8"
LCF 7/8" Cu2Y

Characteristics indicated on this data sheet are those that can be achieved with the highest performance cable. Intrinsic limitations of the cable may diminish the performance of the assembly

Cable retention

- pull off **500** N mini
- torque **NA** N.cm

MECHANICAL CHARACTERISTICS

Center contact retention		
Axial force – Mating end	68	N mini
Axial force – Opposite end	68	N mini
Torque	NA	N.cm mini

TOOLING

Part Number	Description	Hexagon
.	.	.
R282.011.060	STRIPPING TOOL FOR CABLE 7/8 CORRUGATED	-

Recommended torque		
Mating		N.cm
Panel nut		N.cm
Clamp nut	2500	N.cm
A/F clamp nut	33.900	mm

Mating life	100	Cycles mini
Weight	229.200	g

OTHERS CHARACTERISTICS

* Usable 0-11GHz
** ROS DC-2.5GHz
*** RF Leakage : - 80dB mini 3<F<6GHz
**** PIM3 : -112dBm (2x20W at 1.8GHz)

ENVIRONMENTAL

Operating temperature	-55/+155	° C
Hermetic seal	NA	Atm.cm3/s
Panel leakage	NA	

Issue : 0441 B

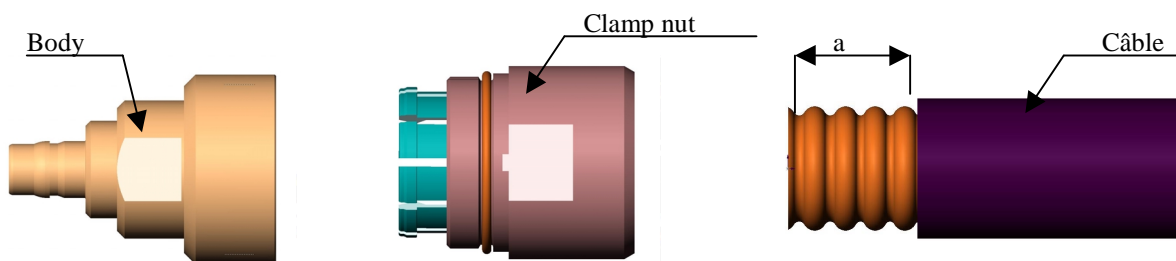
In the effort to improve our products, we reserve the right to make changes judged to be necessary.



STRAIGHT JACK EZ FIT TYPE
7/8" FLEXIBLE CORRUGATED CABLE

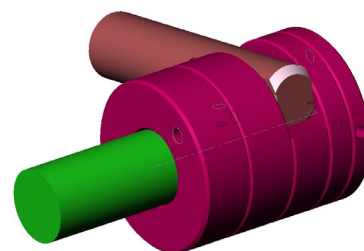
R164.231.000

Series : QN



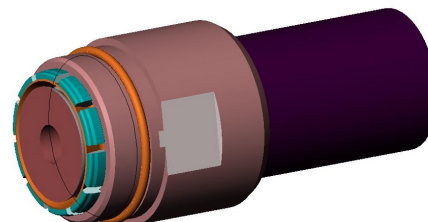
1) STRIPPING OF THE SHEATH

Cut the front extremity of the cable in the summit of a annelure with a hacksaw (cote a).
 Raise the handle and introduce the cable until it stops in the stripping tool .
 Push down the handle by exerting a light pressure on it , keep turning the tool until it turns freely + appointing of the interior of the soul of the cable.
 Raise the handle , and slide the cable out .
 To split the sheath with a tool cutting perpendiculary to the previously undertaken split.
 To remove the sheath cut.



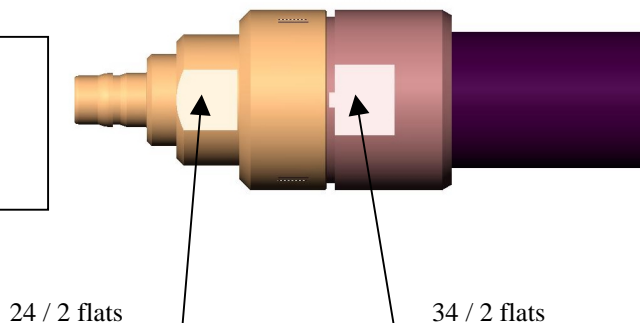
2) CABLE MOUNTING

Mount the clamp nut on the cable , until the clipsage of the elastic contact on the first annelure .
 To push the part defers the tow press in stop on the elastic contact.



3) MOUNTING CABLE

Mount the clamp nut with the cable in the body of the connector.
 Couple of tightening recommended: 2500N.cm



Issue : 0441 B

In the effort to improve our products, we reserve the right to make changes judged to be necessary.

